



ORCHESTRA CAMP AUDITION MATERIALS

STRINGS – please choose the level that BEST demonstrates your current level of playing. Materials are in this packet.

ADVANCED – ONE 3 Octave Scales + Free choice solo (from the standard repertoire for your instrument: Etude, Concerto, Sonata, Unaccompanied Bach, Showpiece etc.)

INTERMEDIATE – ONE 2 octave scales with shifting + Free choice solo (from the standard repertoire for your instrument, Suzuki books, UIL Solos or a piece you play in orchestra at your school).

DEVELOPING – ONE 1st position scales + free choice solo (can be a piece you play in orchestra at your school or another solo)

For questions contact:

Dr. Fagner M. Rocha frocha3@angelo.edu or 325-486-6014

We look forward to seeing you in camp!

3 Octave Scales/Arpeggios

VIOLIN
Advanced



G MAJOR ♩=100

Musical notation for G Major scales and arpeggios. The first two staves show the ascending and descending scales with fingerings (0, 1, 2, 3, 4). The last two staves show the ascending and descending arpeggios with fingerings (0, 1, 2, 3, 4).

D MAJOR

Musical notation for D Major scales and arpeggios. The first two staves show the ascending and descending scales with fingerings (2, 3, 4, 1, 2, 3, 4). The last two staves show the ascending and descending arpeggios with fingerings (2, 3, 4, 1, 2).

3 Octave Scales/Arpeggios

VIOLA
Advanced



C MAJOR ♩=100

D MAJOR

3 Octave Scales/Arpeggios

BASS
Advanced



F MAJOR ♩=100

G MAJOR

2 Octave Scales/Arpeggios

VIOLIN
Intermediate



G Major



D Major



2 Octave Scales/Arpeggios

VIOLA
Intermediate



C Major ♩=100

Musical notation for the C Major scale, two octaves up and down. The notation is in bass clef with a 3/4 time signature. The tempo is marked as ♩=100. The scale is written in two staves. The first staff shows the ascending scale: C4 (0), D4 (0), E4 (1), F4 (1), G4 (2), A4 (4), B4 (4), C5 (4). The second staff shows the descending scale: C5 (0), B4 (1), A4 (0), G4 (2), F4 (0), E4 (1), D4 (0), C4 (0). Fingering numbers are placed above the notes.

G Major

Musical notation for the G Major scale, two octaves up and down. The notation is in bass clef with a 3/4 time signature. The key signature has one sharp (F#). The scale is written in two staves. The first staff shows the ascending scale: G3 (0), A3 (0), B3 (1), C#4 (1), D4 (1), E4 (1), F#4 (4), G4 (2), A4 (4). The second staff shows the descending scale: G4 (0), F#4 (0), E4 (1), D4 (1), C#4 (0), B3 (2), A3 (0), G3 (1). Fingering numbers are placed above the notes.

2 Octave Scales/Arpeggios

Cello
Intermediate



F Major ♩=100

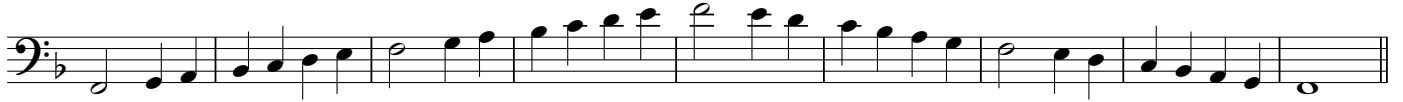
Eb Major

2 Octave Scales/Arpeggios

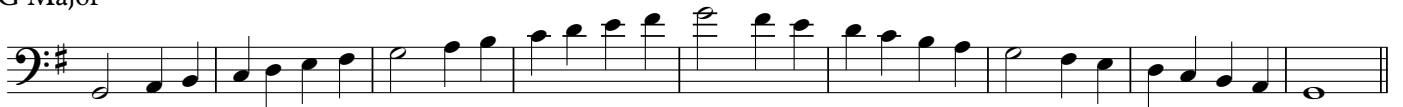
BASS
Intermediate



F Major ♩=100



G Major



1st position Scales/Arpeggios

BASS
Developing



D Major ♩=100



A Major



1st position Scales/Arpeggios

CELLO
Developing



C Major ♩=100



D Major



1st position Scales/Arpeggios

VIOLA
Developing



C Major ♩=100



D Major



1st position Scales/Arpeggios

VIOLIN
Developing



G Major ♩=100



A Major

